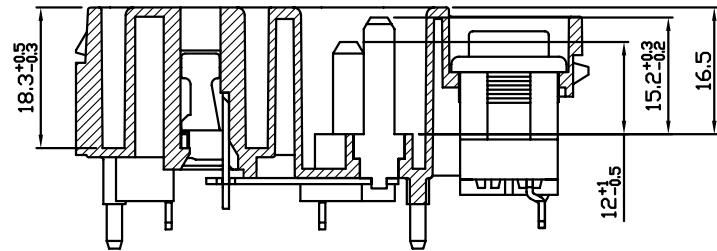
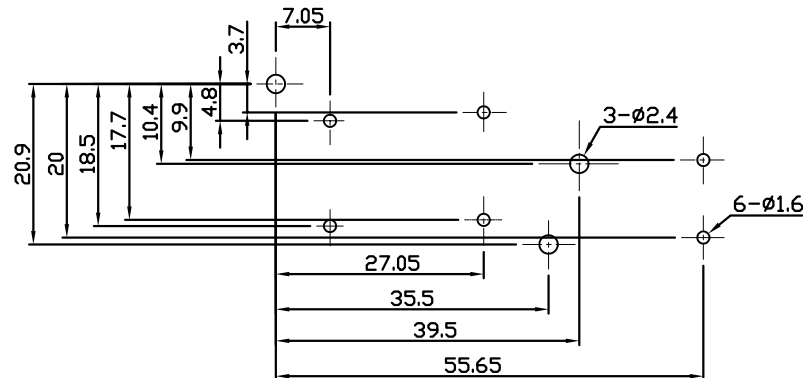


MOUNTING PANEL THICKNESS



SECTION A-A



PANEL CUT-OUT

TOLERANCES UNLESS OTHERWISE 未指定容許差尺寸之公差	
BASIC DIMENSIONS TOLERANCES	
UP TO 10 (10 以下)	±0.3
ABOVE 10 TO 100(10~100)	±0.5
ABOVE 100 (100 以上)	±0.8
ANGULAR DIMENSIONS(角度)	±5°

**SPECIFICATION**

CONTACT RATING :10A 250VAC (C-UL&UL,TUV)

INITIAL CONTACT RESISTANCE: 30mΩ (MAX)

INITIAL INSULATION RESISTANCE: 100MΩ (MIN) 500 VDC

INITIAL WITHSTAND VOLTAGE:

PLEASE REFERENCE TEST SPECIFICATION-3.3

**SPECIFICATION OF ROCKER SWITCH**

CONTACT RATING:12A 125/250VAC ( UL, CSA)

8A/100A 250V~ μ T85 (VDE Ⓢ Ⓣ Ⓝ Ⓣ)

UL CERTIFICATE NO. : E148157

CSA CERTIFICATE NO. : LR77849

VDE CERTIFICATE NO. : 123314

DEMKO CERTIFICATE NO. : 98-04264

SEMKO CERTIFICATE NO. : 9933093/01

NEMKO CERTIFICATE NO. : P99101699

FI CERTIFICATE NO. : FI13724

INITIAL CONTACT RESISTANCE: 20mΩ (MAX)

INITIAL INSULATION RESISTANCE:1000MΩ (MIN) 500VDC

INITIAL WITHSTAND VOLTAGE:

PLEASE REFERENCE TEST SPECIFICATION-3.3

ELECTRONICAL LIFE CYCLES:OVER 10,000 CYCLES

(ACCORDING TO IEC STANDARD)

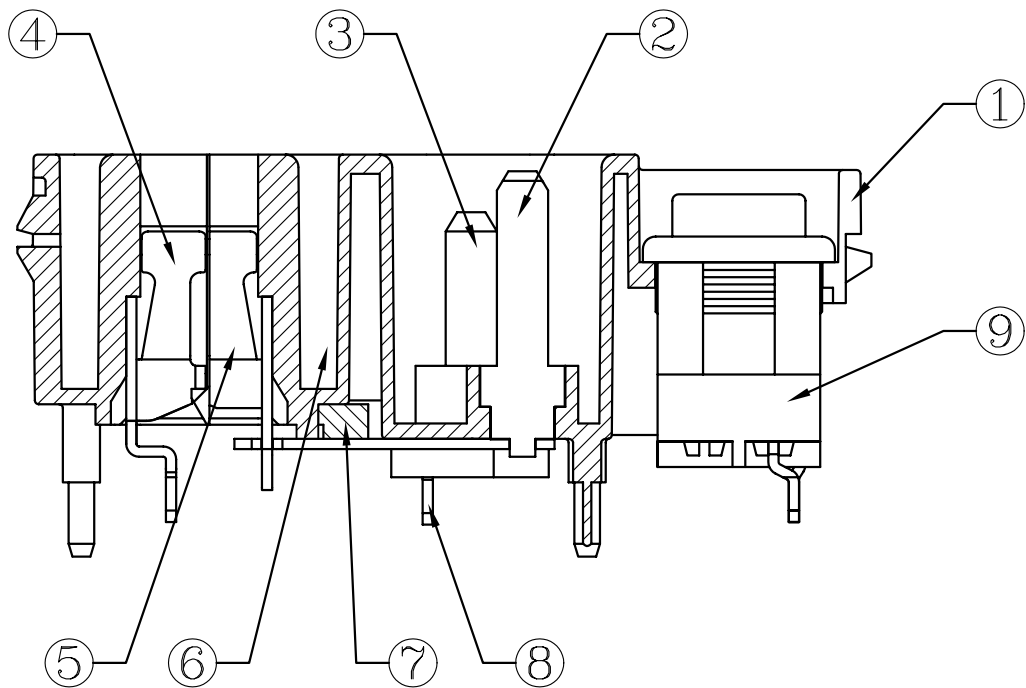
OPERATING: 350±200 GRAM

MATERIAL USED MUST BE COMPLY WITH BQI-0555 .

崧騰企業股份有限公司

SOLTEAM ELECTRONICS CO.,LTD

核准	日期	投影法	單位	DIMENSION UNIT mm	
校對	日期	比例	機型	POWER ENTRY MODULE SERIES	
繪圖	日期	路徑	型號	SC09-1BP1-121	
NO.	DATE	REVISION DESCRIPTION	ISSUE	REVISE	APPROVED



Material List Inlet Socket Model : SC09

NO	PART NAME	MATERIAL	QTY
1	Housing	PA66 ; UL 94V-0	1
2	Insert Pin (Ground)	Nickel Plated Brass	1
3	Insert Pin (Side)	Nickel Plated Brass	2
4	Insert Terminal (Side)	Tin Plated Brass	2
5	Insert Terminal(Ground)	Nickel Plated Brass	1
6	Ground Terminal	Tin Plated Brass	1
7	Insulation plate	PA66; UL 94V-0	1
8	Terminal (Side)	Tin Plated Brass	2
9	Rocker Switch		1

崧騰企業股份有限公司 SOLTEAM ELECTRONICS CO.,LTD

▲						核准		日期		投影法		單位	DIMENSION UNIT mm	
▲						校對		日期		比例	1.8:1	機型	POWER ENTRY MODULE SERIES	
▲						繪圖		日期	041202	路徑	E:\成品圖\SC09	型號	SC09-1BP1-121	
NO.	DATE	REVISION DESCRIPTION	ISSUE	REVISE	APPROVED	DRAWN BY		DATE		DWG NO	E	PART NO		