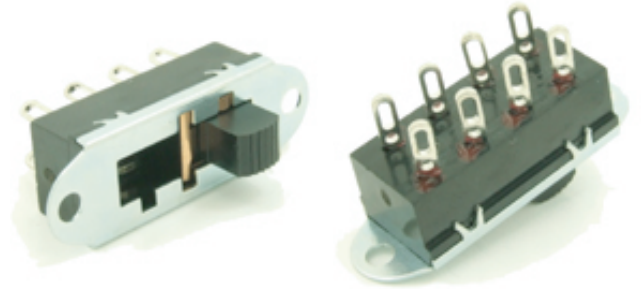


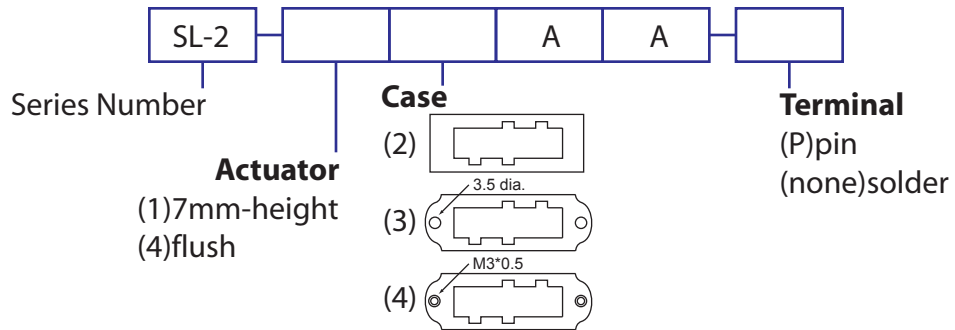
SPECIFICATION

Contact Rating: 6A/250VAC 8A/125VAC(UL, CSA)
 4A/250V~μT85/T55 3E3(N,S,D,FI,VDE)
 Contact Resistance: 50mΩ (max) initial
 Insulation Resistance: 100MΩ (min) 500VDC
 Dielectric Strength: 2000VAC/1 minute
 Electrical Life: 6000 cycles
 Operation Force: 800+/-200g

SERIES NUMBER: SL-2



PART NUMBERING SYSTEM



DIMENSIONS(mm)

